



A1



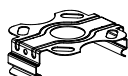
8PCS

A2



8PCS

A3



2PCS

A4



2PCS

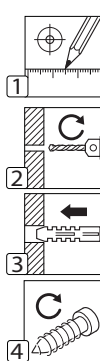
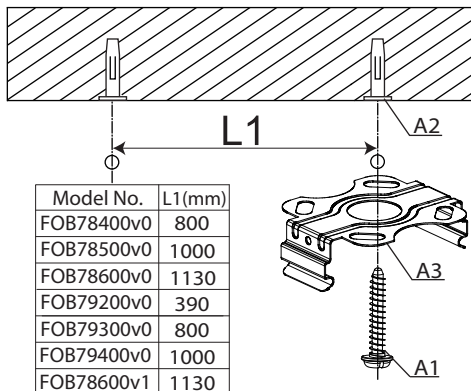
A5



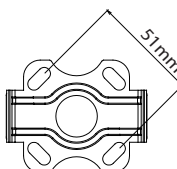
4PCS



OFF



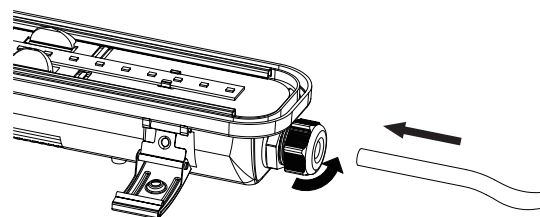
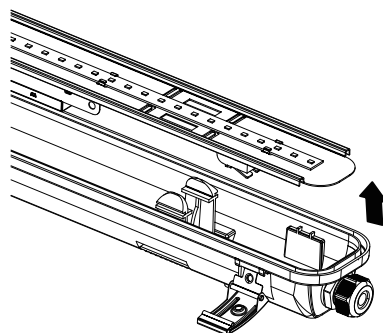
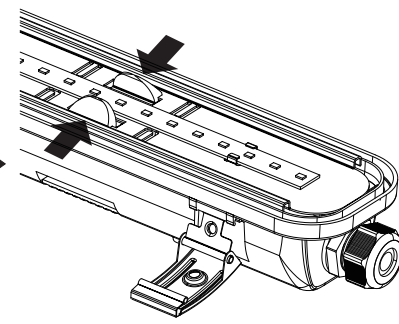
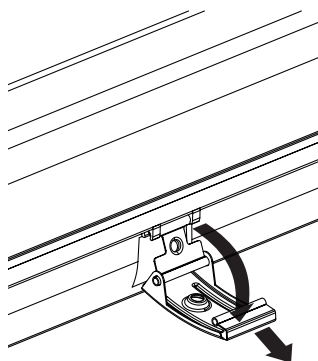
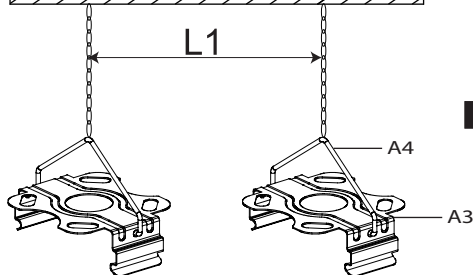
Junction Box

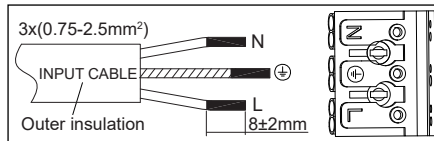
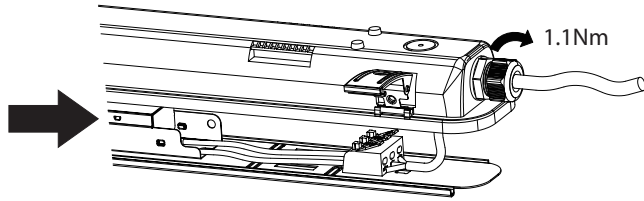


Or

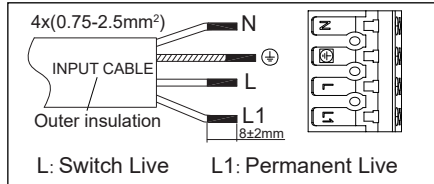


L1

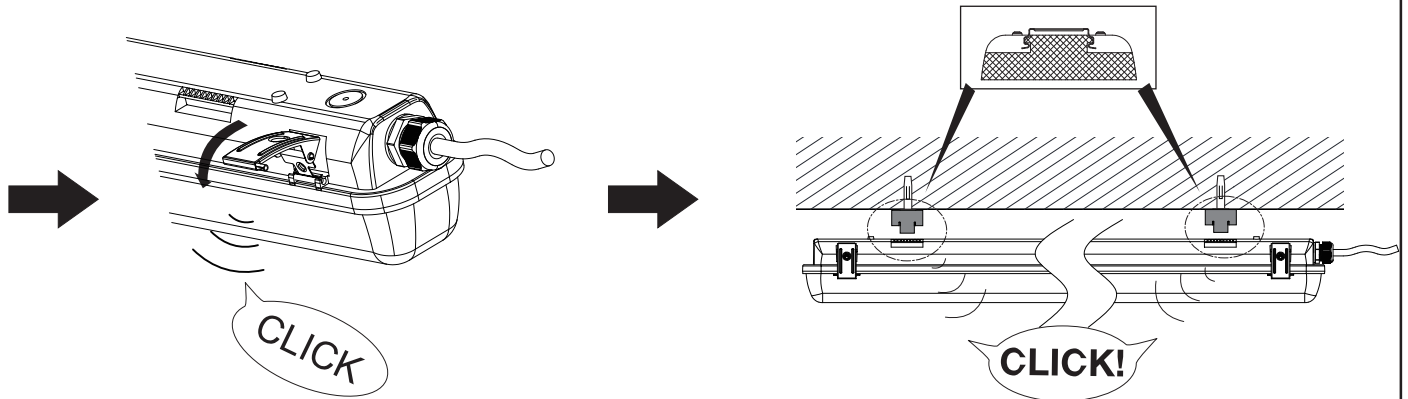
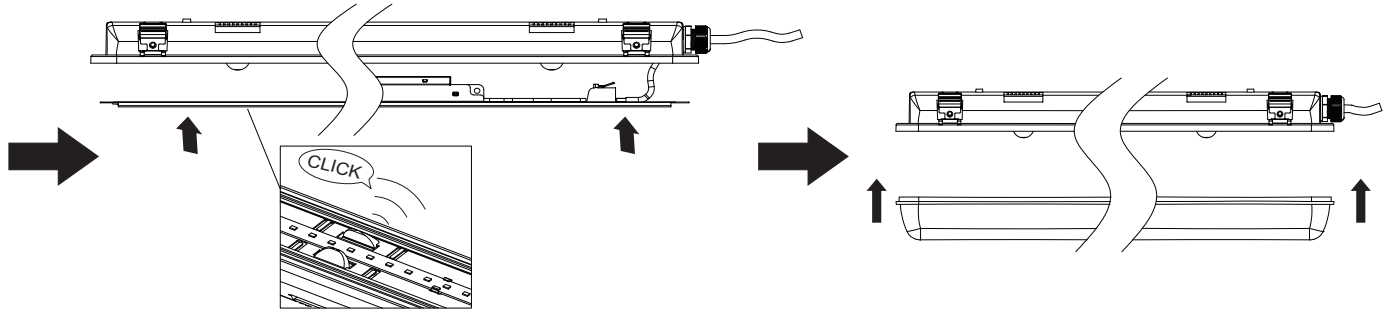




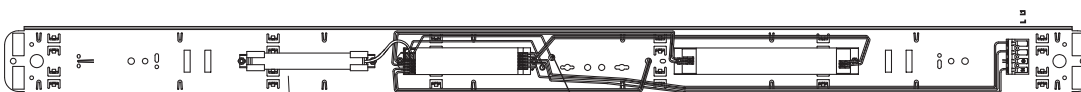
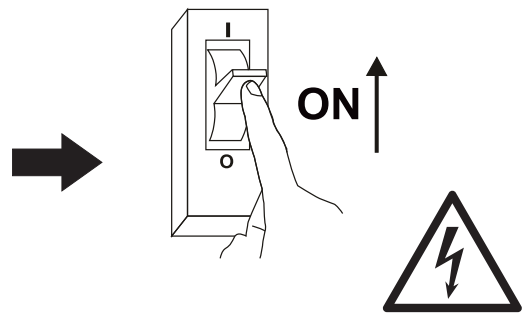
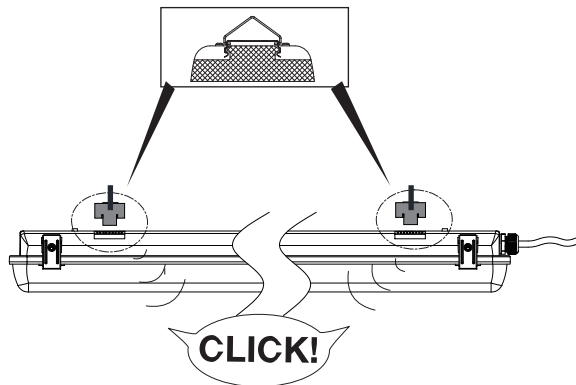
Model No.	
FOB78400v0	FOB79300v0
FOB78500v0	FOB79400v0
FOB78600v0	FOB78600v1
FOB79200v0	



Model No.	
FOB79200v0-em	
FOB79300v0-em	
FOB79400v0-em	

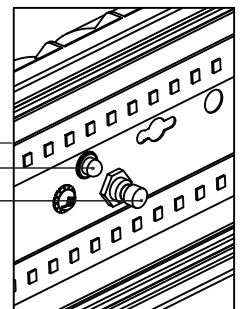


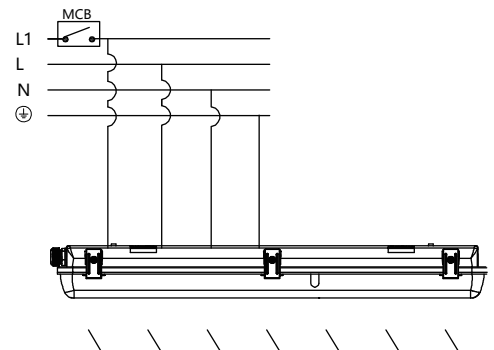
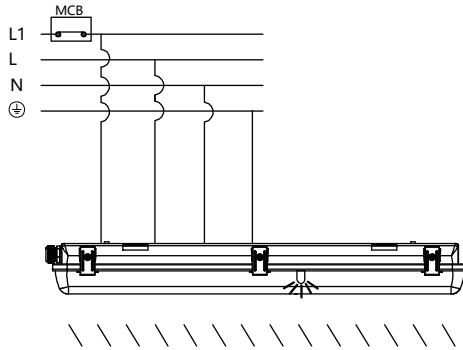
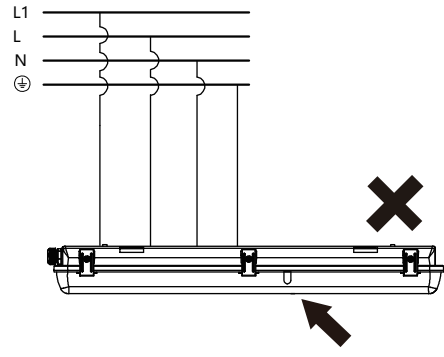
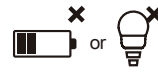
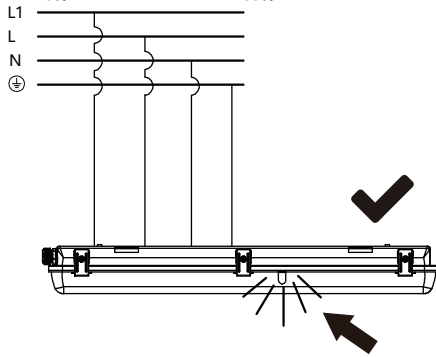
Or



Replaced by Approved Battery  
( LiFePO<sub>4</sub> 1.5Ah 6.4V )  
every 3 years

Indicator  
Test Button





### EMERGENCY LUMINAIRE TEST RECORD

INSTALLATION ENGINEERS .....

TEL .....

LUMINAIRE TYPE .....

IDENT/SERIAL No .....

LOCATION .....

INSTALLATION DATE .....

MONTH	TEST TYPE	FIRST YEAR		SECOND YEAR		THIRD YEAR		FOURTH YEAR		FIFTH YEAR	
		SIGN	DATE	SIGN	DATE	SIGN	DATE	SIGN	DATE	SIGN	DATE
1	FUNCTIONAL										
2	FUNCTIONAL										
3	FUNCTIONAL										
4	FUNCTIONAL										
5	FUNCTIONAL										
6	1 HOUR										
7	FUNCTIONAL										
8	FUNCTIONAL										
9	FUNCTIONAL										
10	FUNCTIONAL										
11	FUNCTIONAL										
12	1 HOUR										
13	FULL DURATION										

DAILY: check charge indicators are lit maintained/combined lamps illuminate; any faults are recorded

MONTHLY: in addition to the daily check - a functional test of at least 3 minutes duration to confirm lamp is working on battery power by simulating a mains failure.

SIX MONTHLY: in addition to the daily check - a functional test of at least one hour to confirm lamp is working on battery power by simulating a mains failure.

ANNUALLY: in addition to the daily check - a functional test of rated duration to confirm full operation to specification by simulating a mains failure.

A copy of this report must accompany any fitting returned to the manufacturer for any reason.



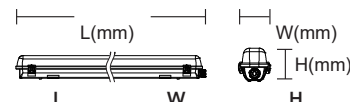
Caution – Risk of Electric Shock! Vorsicht - GEFAHR EINES STROMSCHLAGS! ATENCIÓN - RIESGO DE DESCARGA ELÉCTRICA! Attenzione - RISCHIO DI SCOSSA ELETTRICA!  
ATTENTION - RISQUE DE CHOC ÉLECTRIQUE! Voorzichtig - GEVAAR VOOR EEN ELEKTRISCHE SCHOK! POZOR! - Riziko úrazu elektrickým proudem.

The light source contained in this luminaire shall only be replaced by the manufacturer or his service agent or a similar qualified person.  
Das in dieser Leuchte enthaltene Leuchtmittel darf nur durch den Hersteller, seinen Kundendienst oder entsprechend qualifiziertes Fachpersonal ausgetauscht werden.  
La fuente de iluminación de esta luminaria solo debe ser sustituida por el fabricante o su agente de servicio, o en su caso, por personal cualificado.  
La sorgente luminosa contenuta in questo apparecchio deve essere sostituita esclusivamente dal produttore, dal suo rappresentante o da una persona similmente qualificata.  
La source lumineuse contenue dans ce luminaire ne doit être remplacée que par le fabricant ou son agent de maintenance ou une personne de qualification équivalente.  
De lichtbron in deze lamp mag alleen worden vervangen door de fabrikant, zijn serviceagent of een vergelijkbaar gekwalificeerd persoon.  
Zdroj světla v tomto svítidle smí být vyměněn pouze elektrikářem, nebo servisním agentem výrobce.

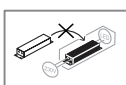
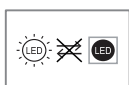
If the external flexible cable or cord of this luminaire is damaged, it shall be replaced by a special cord or cord exclusively available from the manufacturer or his service agent.  
Falls eine spezielle Leitung vorhanden ist: Wenn die Anschlussleitung der Leuchte beschädigt ist, muss diese durch eine spezielle oder ausschließlich beim Händler erhältliche Leitung ersetzt werden.  
Si el cable flexible exterior de esta luminaria resulta dañado, deberá ser sustituido por un cable especial disponible exclusivamente en el fabricante o su representante.  
Se il filo o cavo esterno flessibile di questo apparecchio d'illuminazione è danneggiato, deve essere sostituito da un cavo o filo speciale disponibile esclusivamente presso il fabbricante o il suo servizio di manutenzione.  
Si le câble ou le cordon extérieur souple de ce luminaire est endommagé, il doit être remplacé par un câble ou un cordon spécial provenant exclusivement du fabricant ou de son agent de maintenance.  
Als de externe flexibele kabel of snoer van dit armatuur is beschadigd, dient het door een speciaal snoer of door een snoer dat exclusief door de producent wordt geleverd danwel via haar agent, te worden vervangen.  
Je-li externí kabel poškozen, může být vyměněn speciálním kabelem, nebo kabelem, který dodá servisní agent výrobce

This product contains a light source of energy efficiency class <X>  
Este producto contiene una fuente luminosa de la clase de eficiencia energética <X>  
Dieses Produkt enthält eine Lichtquelle der Energieeffizienzklasse <X>  
Questo prodotto contiene una sorgente luminosa di classe di efficienza energetica <X>  
Ce produit contient une source lumineuse de classe d'efficacité énergétique <X>  
Dit product bevat een lichtbron van energie-efficiëntieklasse <X>  
Tento výrobek obsahuje světelný zdroj třídy energetické účinnosti <X>

## P I CCT Light source energy efficiency class <X>



	P	I	CCT	Light source energy efficiency class <X>	L (mm)	W (mm)	H (mm)
FOB78400v0	20W	100mA	4000K	D	1270	76	83
FOB78500v0	28W	135mA	4000K	D	1570	76	83
FOB78600v0	34W	160mA	4000K	D	1865	148	86
FOB79200v0	30W	140mA	4000K	D	655	102	86
FOB79300v0	40W	200mA	4000K	D	1265	102	86
FOB79400v0	56W	270mA	4000K	D	1565	102	86
FOB78600v1	70W	340mA	4000K	D	1865	148	86
FOB79200v0-em	34W	160mA	4000K	D	655	102	86
FOB79300v0-em	44W	215mA	4000K	D	1265	102	86
FOB79400v0-em	60W	290mA	4000K	D	1565	102	86



220-240V~

50/60 Hz

$\lambda$   
>0.9

$t_a$   
-30°C ~ +50°C

IP65



UK  
CA

CE

